

LGID NUMBER 66981

LAKE BLUFF
METROPOLITAN DISTRICT NO. 2

E₁ SEC. 1, T.5N., R.67W., 6TH P.M.
GREELEY, WELD COUNTY, COLORADO

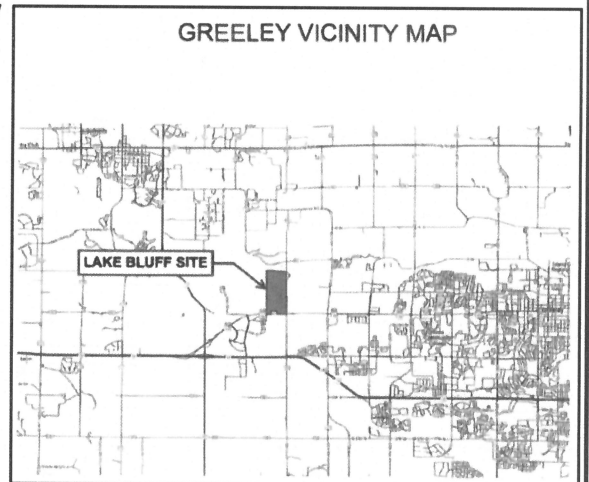
NORTH QUARTER CORNER
SECTION 1, T.5N., R.67W.

EAST SIXTEENTH CORNER
SECTION 1, T.5N., R.67W.
SECTION 36, T.6N., R.67W.

NORTHEAST CORNER
SECTION 1, T.5N., R.67W.



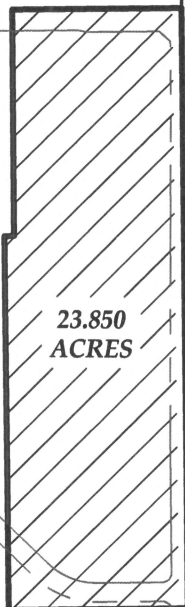
=DISTRICT BOUNDARIES



CENTER QUARTER CORNER
SECTION 1, T.5N., R.67W.

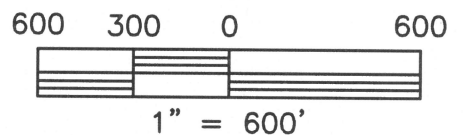
EAST QUARTER CORNER
SECTION 1, T.5N., R.67W.

CENTER-EAST
SIXTEENTH CORNER
SECTION 1, T.5N., R. 67W.



23.850
ACRES

95TH AVENUE



SOUTHEAST CORNER
Section 1, T.5N., R.67W.

STATE HIGHWAY #34

10TH STREET

SOUTH QUARTER CORNER
SECTION 1, T.5N., R.67W.

EAST SIXTEENTH CORNER
SECTIONS 1/12, T.5N., R.67W.



NOTE: This exhibit drawing is not intended to be a
monumentalized land survey. Its sole purpose is as
a graphic representation.

Michael Chad Dilka – On Behalf Of King Surveyors
Colorado Licensed Professional Land Surveyor #38106



KING SURVEYORS

650 E. Garden Drive | Windsor, Colorado 80550
phone: (970) 686-5011 | fax: (970) 686-5821
email: contact@KingSurveyors.com

PROJECT NO:20180465-A

DATE: 12/27/2023

CLIENT: SPECIAL DISTRICT MANAGEMENT SERVICES

DWG: 20180465-METRO DIST #2 REV DEC 2023

DRAWN: MCD CHECKED: MCD